

The background features abstract, overlapping geometric shapes in various shades of green, ranging from light lime to dark forest green. The shapes are primarily triangles and polygons, creating a dynamic, layered effect. The central text is positioned on a white background that is partially framed by these green shapes.

# Adding Adjectives- Colours

▶ Noir/e

► Gris/e



▶ Bleu

▶ Orange

▶ Brun/e

▶ rose

▶ Vert/e





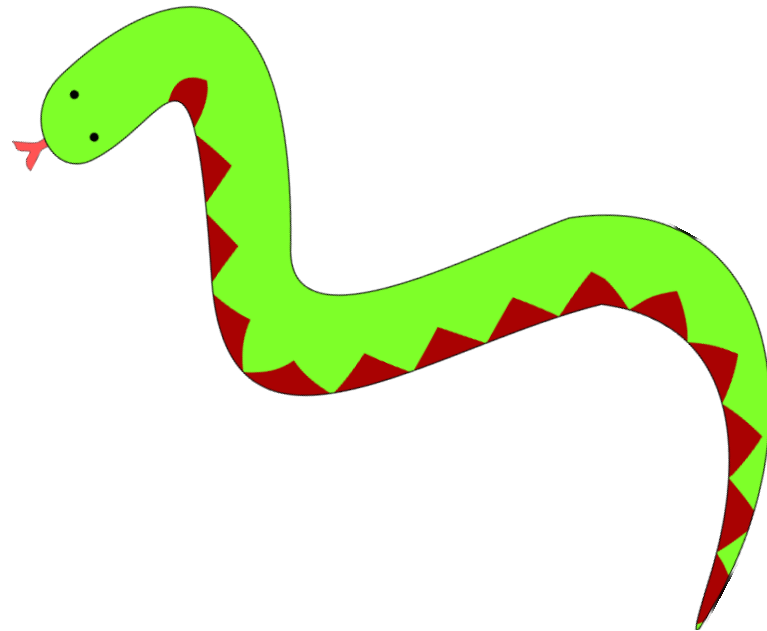
▶ Rouge

▶ Jaune

► Blanc/blanche

Qu'est-ce que c'est?

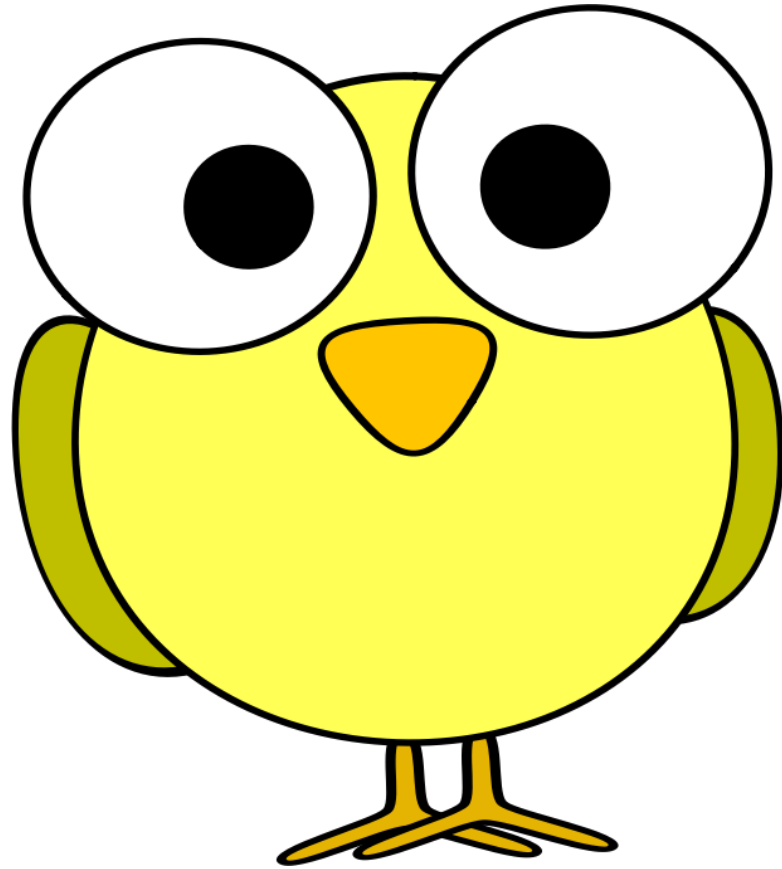
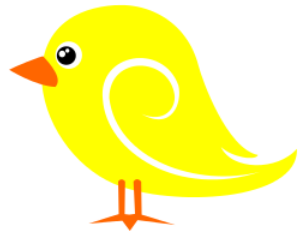
C'est un serpent vert.



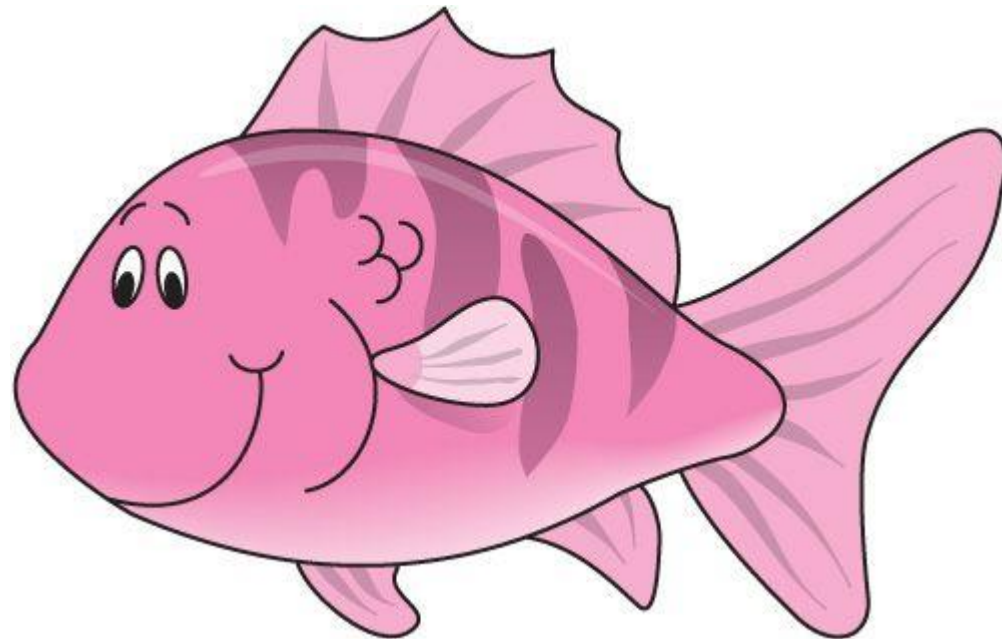
C'est un chien brun.



C'est un oiseau jaune.

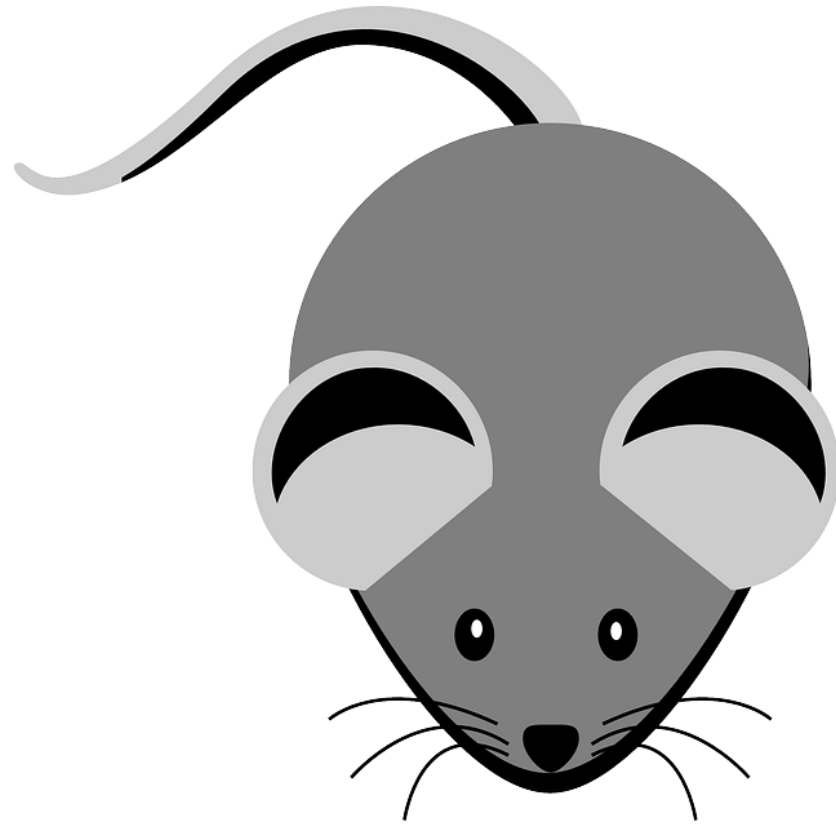


C'est un poisson rose.

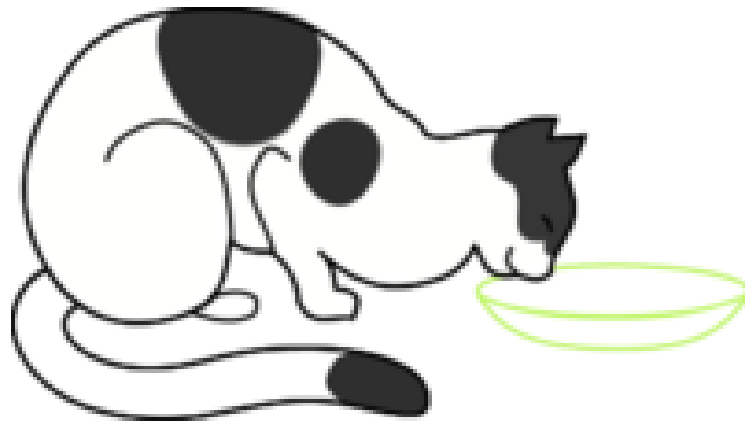




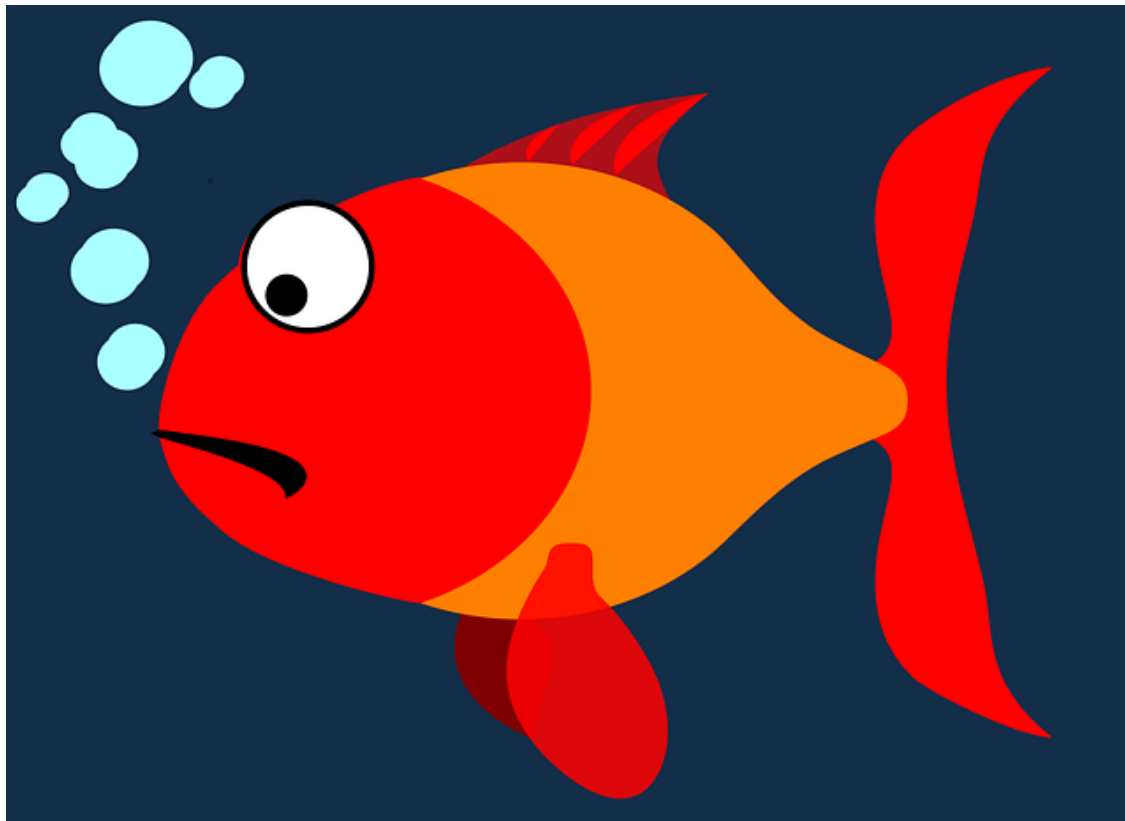
C'est une souris grise.



C'est un chat noir et blanc.



C'est un poisson rouge et orange.



The background features abstract, overlapping geometric shapes in various shades of green, ranging from light lime to dark forest green. These shapes are primarily located on the left and right sides of the frame, leaving a large white central area. The shapes are layered, creating a sense of depth and movement.

To have

Elle a un souris gris.



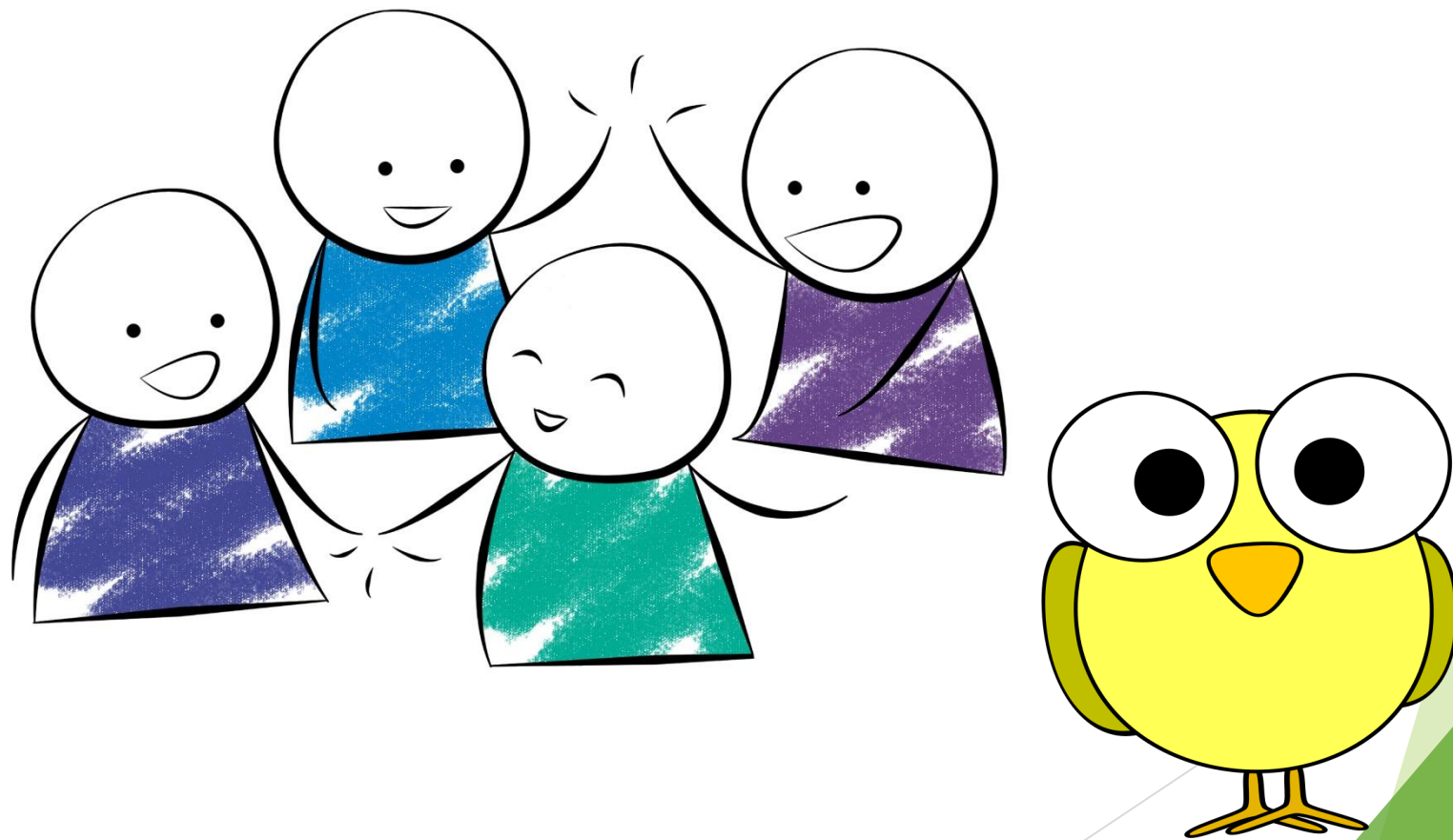
Il a un chat noir et blanc.



Elles ont chein brun.



Ils ont oiseaux jaunes.





Nous avons serpent vert.

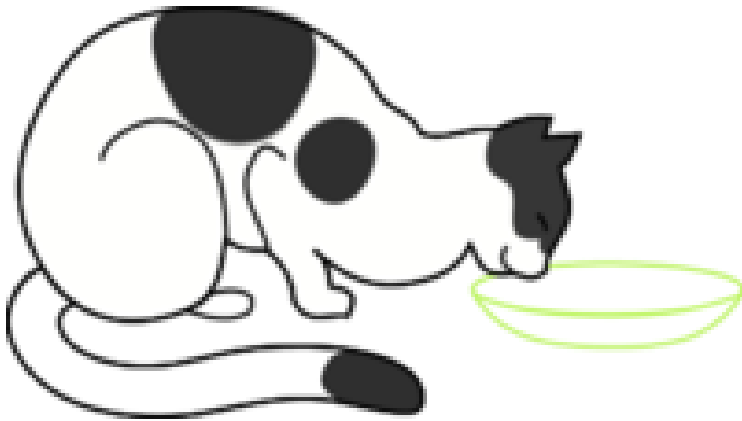


To be...



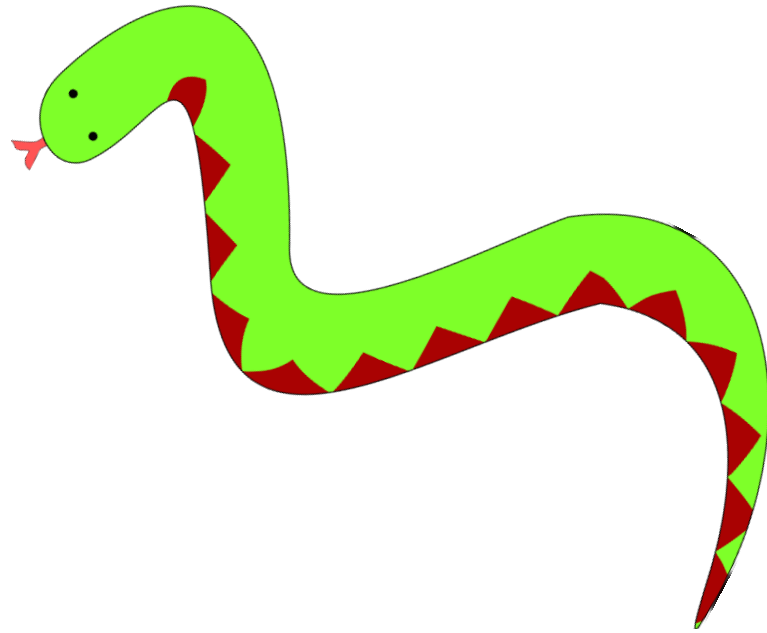
# Tu es un chat noir et blanc.

► You (s) are a...



Je suis un serpent vert.

► I am a...



# Nous sommes souris grises.

► We are



Ils sont des oiseaux jaunes.

► They are...

